

# Product Catalog

Ver 1.0



## **Promis Medical Technologies GmbH**

Theodor-Storm-Str. 33b  
D-25451, Quickborn, Germany  
Tel: +49 (0) 410668080, fax: + 49 (0) 410682285  
Email ID: [info@promis-medical.de](mailto:info@promis-medical.de)  
Website: [www.promis-medical.de](http://www.promis-medical.de)

## **Promis Medical (Australia) Pty Ltd.**

30/11-13 Brookhollow Avenue  
Baulkham Hills, NSW 2153, Australia  
Phone/Fax: + 61 2 8850 6918  
Email ID: [info@promis-medical.com.au](mailto:info@promis-medical.com.au)  
Website: [www.promis-medical.com.au](http://www.promis-medical.com.au)

# DEVICES

## DEVICES

### CCD-Cameras

#### ECS-222-Series

**Optional:**

- Freeze – Function
- Foot- Switch
- RGB-Video-Outputs
- Titel Generator



ECS -222 Series is an extra small housing represents highest picture quality and user-friendly operations by an ON-SCREEN-MENU and optional remote control vial push-buttons on the camera head. A further option is an additional digital output.

Order Details	
<b>PM-ECS-222 Including</b>	Digital- 1- CCD Camera, Mains Cable, Y/C-BNC-Cable, User Manual
<b>PM-ECS-222-R</b>	Digital- 1- CCD Camera, with remote control, User Manual
<b>PM-ECS-222-DV-R</b>	Digital 1-CCD-Camera, With remote control and IEEE-1394, Output Mains cord, Y/C-BNC/ DV-cable, User Manual
Technical Data	
<b>Video System</b>	PAL/ NTSC
<b>CCD Sensor</b>	PAL: 1/3", 440.000 px., 725(H) x 582 (V) & NTSC: 1/", 380.000 px, 768 (H) x 494 (V)
<b>Video Resolution</b>	470 TV – lines
<b>Shutter Speed</b>	1/50 sec – 1/ 100.000 sec.
<b>Sensitivity</b>	<1 lx
<b>Outputs</b>	1 x VBS, 1x Y/C & 1 x IEEE 1394 (DV-Version)
<b>Settings</b>	On –Screen- Menu
<b>Power Supply</b>	100-240 VAC
<b>Dimensions</b>	215 x 80 x 255 mm
<b>Weight</b>	CCU: 2,5 kg, Head 65 g
<b>Classified</b>	1/ BF
<b>Produced a. tested acc.</b>	IEC 601-1/CE; EN 60601-1-1 93/42 ECC

## Endoscopy Video Camera

### FHD-111



FHD-111 is an advanced video camera of the latest generation with excellent image quality in full high definition format. Aspect ratio 16:9 / 16:10 & outstanding natural colour reproduction for most challenging requirements of modern day Endoscopy applications FHD-111 meets highest quality standards and ensure high end image quality generated by high speed full digital image processing, separated for red, green and blue channels.

#### Multi-Dimensional Camera Head

FHD-111 features aerodynamic design of camera head which is small size, light weight & fully water proof including cable with cover cap on.

Camera head has C-Mount thread where standard focusable couplers zoom couplers, Endoscope adaptors and other compatible lenses can be connected directly.

Electronic buttons on the camera head are freely programmable so the various camera functions can be executed or activated via these buttons e.g white, balance, boost menu.

An array of functions e.g white balance, boost (image brightening), zoom in out, freeze and change of user data etc. are possible.

The versatile OSD menu can be accessed through the head keys thus enabling the user to make best use of high end full definition camera function.

Via optional a PS-2 keyboard, all camera functions can be controlled and OSD menu can be navigated. The user is also able to place an individual text on the screen with aid of the keyboard.

Technical data	PM-FHD-111
<b>Video System</b>	progressive scan with 50 or 60 Hz
<b>Sensor</b>	1/3 MOS
<b>Video resolution</b>	> 1200 TV-lines horizontal
<b>Aspect Ratio</b>	16:9
<b>S/N</b>	54 db
<b>Resolution</b>	Full HD 1920x1080 pixel
<b>Minimal Subjective Sensitivity</b>	0.5 Lux
<b>Settings</b>	On-Screen-Menu 3 User setting storable
<b>Power Supply</b>	100 – 240 VAC

<b>Dimensions (WxHxD)</b>	CCU 353 x 103 x 253 mm Head 77 x 54 x 39.5 mm
<b>Weight</b>	CCU 4.7 Kg Head 128 g
<b>Class /Type</b>	C-mount thread, immerasable Two push-buttons for remote High flexible cable : 4 meter
<b>Outputs Digital out</b>	2 x HD SDI (optional) 1 x HDMI/ DVI
<b>Analog Out</b>	1 x YPbP/ RGB 1 x Y/C (PAL/ NTSC)
<b>Manufactured &amp; Tested</b>	IEC 301-1/ EN 60601-1/ MDD 93/42/EEC

## DEVICES

### CCD Cameras

#### ECS-777-Full-HD

##### Optional:

Keyboard (waterproof)

Foot Switch



#### PM-ECS-777-FULL-HD is a HD-Camera of the latest generation:

##### Full resolution of 1920 x 1080

True HD Format of 16:9 integrable to 16:9 (16:10) HD TV/ LCD Monitors

##### Progressive Scan

Creates a picture signal with double the scan lines of a conventional interlaced picture, to create a noticeably sharper image. It offers higher picture quality and eliminates virtually all motion artifacts.

##### Multilingual Menu

Camera settings (like colour, brightness, area) can be made in the On-screen-menu. Settings are stored in memory. This menu is available in different languages: English, Deutsch, French, Spanish, Italian, Portuguese

##### Character Generator

Creates on-screen-information on all video outputs by using standard PS2 keyboards

##### 2.5 Digital Zoom

Up to 2x5x digital zoom via push buttons

##### Freeze Function

The image on the screen can be frozen via push-buttons on the camera head or an optional footswitch

##### Push Buttons

Via multifunctional push- buttons on the camera head it is possible to remote more than 2 camera functions.

#### Technical Data

<b>Video System</b>	progressive scan with 50 or 60 Hz
---------------------	-----------------------------------

<b>CCD Sensor</b>	3 x 1/3 CCD
-------------------	-------------

<b>Video resolution</b>	> 1000 TV-lines horizontal
-------------------------	----------------------------

<b>Aspect Ratio</b>	16:9
---------------------	------

<b>S/N</b>	54 db
------------	-------

<b>Resolution</b>	Full HD 1920 x 1080 pixel
-------------------	---------------------------

<b>Minimal subjective sensitivity</b>	< 3lx
---------------------------------------	-------

<b>Outputs</b>	<b>Digital Out</b>	2 x HD SDI 1 x HDMI / DVI
	<b>Analog Out</b>	1 x YPBPr/ RGB 1 x Y/C (Pal/ NTSC) 1 x CVBS (PAL/ NTSC)

<b>Settings</b>	On-Screen-Menu 3 user setting storable
-----------------	---

<b>Power Supply</b>	100-240 VAC
---------------------	-------------

<b>Dimensions (WxHxD) CCU</b>	353x103x253 Head 168 g
-------------------------------	---------------------------

<b>Class/Type</b>	1/BF
-------------------	------

#### Order Details

<b>PM-ECS-777-Full-HD</b>	<b>Digital 3-CCD HD Camera</b>
Including	Mains Cable, HDMI-DVI-Cable, RGB-Cable, Y/C, BNC Cable User Manual

#### Accessories

<b>PM-TV-28-HD</b>	HD-TV-Coupler f= 28 mm
--------------------	------------------------

<b>PM-TV-25-HD</b>	HD-TV-Coupler f= 25mm
--------------------	-----------------------

<b>PM-LS-10-0-HD</b>	HD Laparoscope, 10 mm 0°
----------------------	--------------------------

<b>PM-LS-10-30-HD</b>	HD- Laparoscope, 10 mm 30°
-----------------------	----------------------------

<b>PM-LS-5-0-HD</b>	HD-Laparoscope, 5 mm 0°
---------------------	-------------------------

<b>PM-LS-5-30-HD</b>	HD- Laparoscope, 5 mm 30°
----------------------	---------------------------

## Combinations

### Compact System

PM-XE-50 is a multifunctional video system which incorporates light source, camera, TFT-monitor, USB-archiving feature or a digital output IEEE 1394. Pictures are stored on to a USB stick. Data from the USB stick can be easily transferred to a computer via standard USB port.

### Technical Data

<b>Video System</b>	PAL/ NTSC
<b>CCD Sensor</b>	PAL: 440.000 pixel 752 (H) x 582 (V) NTSC: 380.000 pixel 768 (H) x 494 (V)
<b>Resolution</b>	470 TV-lines
<b>Shutter Range</b>	1/50 sec - /100.000 sec
<b>Sensitivity</b>	<1 lx
<b>Video Outputs</b>	1xY/C; 1 x BNC; 1xIEEE 1394 (DV-version)
<b>Lamp</b>	Xenon metal halid 50 W, 5.500 °K
<b>Monitor</b>	10,4" TFT with 800 x 600 dots resolution
<b>Archiving System</b>	USB-Stick (only USB version)
<b>Power Supply</b>	90 VAC-260 VAC 50-60 Hz
<b>Dimensions</b>	CCU: 294 x 195 x 250 mm
<b>Weight</b>	CCU: 6,0 kg/ Head: 65 g
<b>Classified</b>	1
<b>Manufactured and tested acc.</b>	IEC 601-1/ CE EN 60601-1 93/42/ECC



**PM-XE-50-USB**

### Order Details

**PM-XE-50-USB** Multifunctional Video System USB  
Including  
Control Unit  
USB stick incl. Software  
Camera head  
Y/C / BNC cable  
Mains cords  
User Manual

**PM-XE-50-DV** Multifunctional Video System DV  
Including  
Combination  
DV-Output IEEE 1394  
Camera Head  
Y/C / BNC / DV Cable  
Mains Cords  
User Manual

### Accessories

**PM-USB-1** USB-stick, incl. Software

**PM-X50** Xenon metal halid lamp, 50 W

## LED Light Source

### LED 400

**Features:**

**Functionality:** Stable lumen maintenance kept at a constant level over 50.000 hours of operating time.

Stable colour temperature and smooth intensity control over the entire range of regulation starting from 1 % upto 100%.

**Safety:** Embedded program that examines all crucial parameters of the device.

The device recognizes presence of light guide cable placed in the socket.

**Reliability:** Long lifetime which ensures high quality and safety of operation.

Wide range of supplying voltage starting from 90 up to 263 V AC and immunity to voltage fluctuations.

**Usability:** User interface equipped with highlighted buttons and corresponding icons to improve their visibility in poorly lighted operating rooms/theatres.

Non-volatile memory of the latest settings

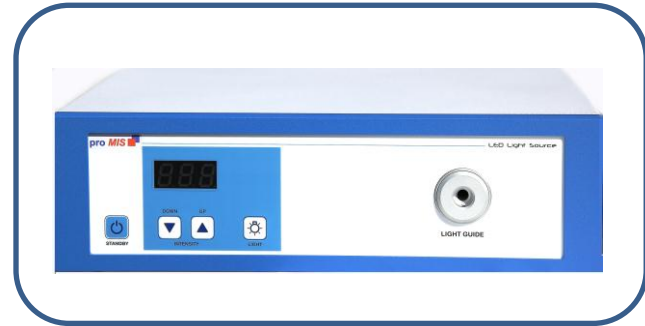
Low power consumption in comparison to traditional halogen and xenon light sources.

Large LED display that simplifies reading of parameters even from a distance.

Economical usage as a result of application of high power light emitting diodes.

Ultra silent work that produces noise below 30 db.

The newest LED light source manufactured by promis is a response for needs of demanding medical market. Its unquestionable advantage over traditional Halogen and Xenon Light Sources are much lower power consumption, longer lifetime, reduced IR radiation and lower price while keeping the light intensity at the level of 180 W Xenon Light Source. The lifetime of a LED is guaranteed upto 50000 hours. Its additional virtue is silent work.



**LED Light Sources**

Type of LED	Ultra-high power Module optically focused
LED Geometry	focusing reflector with lenses
Color Temperature	6000°K +/-5%
Standard Connection Plug for light guide cables	Optional and upon request
Life time of lamp/LED	upto 50.000 hours
Line Voltage	90-263V AC
Frequency	50/60 Hz
Dimensions (wxdxh)	330x306/96 (mm)
Weight	5,6 kg
Ambient temperature	+10°C- +40°C during storage
Max. relative air humidity Classification	90% during storage Class 1/BF
Casing Safety Standard	IP XO- not protected against ingreos of water (falls)
CE Standard	Comply with the European directive 93/42/EEC

## DEVICES

### Cold Light Source

### Xenon Light Source

proXE-180 has been specially designed for endoscopic applications. With mechanical shutter the output intensity can be adjusted without an effect on color temperature.



#### PM-proXE-180

##### Order Details

<b>PM-proXE-180</b> including	Cold Light Source Mains Cable User Manual
----------------------------------	---

##### Spare Bulbs

<b>PM-180</b>	XBO R 180 W/ 45C
---------------	------------------

The devices have a standard adapter for Storz light guides. Optional Olympus, Wolf ACMI

##### Technical Data

Lamp	Xenon 180W
Expected Operating Life	500 hours
Colour temp	~ 6.000° K
Line Voltage	115/230 VAC
Frequency	50/60 Hz
Power Consumption	280 W
Brightness Control	Electronical/mechan.Shutter
Light Cable Connector	Storz
Weight	6,5 kg
Dimensions (WxHxD)	275 x 110 x 330 mm
Classified	BF
Produced a.tested acc.:	IEC 601-1/ CE, EN 60601-1 93/42 ECC

Operation cycles: 1 hour on / 1 hour off



## DEVICES

### Cold Light Sources

#### Xenon Light Source 100W/ 180W/ 300 W/ manual

Promis offers a wide range of Xenon Light Sources with high intensity and low heat conductive xenon lamp.

Lamp replacement is very easy.



#### PM-XL-300-LX

##### Order Details

<b>PM-XL-100-LX</b> Including	Xenon Cold Light Source Mains Cable User Manual
----------------------------------	---

##### Spare Bulbs

<b>PM-100</b>	XBO R 100 W/ 45C
---------------	------------------

##### Order Details

<b>PM-XL-180-LX</b> Including	Xenon Cold Light Source Mains Cable User Manual
----------------------------------	---

##### Spare Bulbs

<b>PM-180</b>	XBO R 180 W/ 45C
---------------	------------------

##### Order Details

<b>PM-XL-300-LX</b> Including	Xenon Cold Light Source Mains Cable User Manual
----------------------------------	---

##### Spare Bulbs

<b>PM-300</b>	PE-300-BF
---------------	-----------

#### Options:



#### Adapter

#### PM-YUR

(Storz/ Wolf/ Olympus/ ACMI)

Available also with 150W  
Halogen Spare lamp

**PM-XL-100LX-150H**

**PM-XL-180LX-150H**

**PM-XL-300LX-150H**

Only available in Manual version

## DEVICES

### Cold Light Sources

#### Xenon Light Sources 100W/ 180W/ 300W

Options:



**Adapter**  
**PM-YUR**  
(Storz/ Wolf/ Olympus/ ACMI)

#### Technical Data

<b>Lamp</b>	Xenon 100/180/300 W (XL-100, XL-180, XL-300)
<b>Expected Operating Life</b>	500 hours
<b>Colour Temp</b>	~ 6.000° K
<b>Line Voltage</b>	15/230 VAC
<b>Frequency</b>	50/60 Hz
<b>Power Consumption</b>	180 W/ 280 W/ 370W
<b>Brightness Control</b>	electronical/ mechan . Shutter Automatically (BNC) XL-100-ALX/180
<b>Light Cable Connector</b>	<b>Storz</b>
<b>Weight</b>	8,0 kg / 8,0 Kg/ 9,5 Kg
<b>Dimensions (WxHxD)</b>	355 x 110 x 347 mm
<b>Classified</b>	BF
<b>Product a.tested acc</b>	IEC 601-1/ CE, EN 60601-1 93/ 42 EEC
<b>Working Temp.</b>	+ 10° - + 40° C
<b>Operation Cycles: 1 hour on/ 1 hour off</b>	

#### Order Details

**PM-XL-100-ALX** Xenon Cold Light Source with autom  
Including Intensity control mains cable  
BNC –cable User Manual

#### Spare Bulbs

**PM-100** XBO R 100 W/ 45C

#### Order Details

**PM-XL-180-ALX** Xenon Cold Light Source with autom  
Including Intensity control mains cable  
BNC –cable User Manual

#### Spare Bulbs

**PM-180** XBO R 180 W/ 45C

#### Order Details

**PM-XL-300-ALX** Xenon Cold Light Source with autom  
Including Intensity control mains cable  
BNC –cable User Manual

#### Spare Bulbs

**PM-300** PE-300-BF

## DEVICES

### Cold Light Sources

#### Halogen Light Source 250W

Promis HL-250-DX is latest in series of our well known light sources.

Facility of backup lamp ensures uninterrupted working if one lamp breaks down.



**PM-HL-250-DX** 2 Lamps – 2 outputs

#### Order Details

PM-HL-250-X including	Cold Light Source Mains Cable User Manual
-----------------------	---

#### Spare Bulbs

PM-250	Osram HLX 64653 (Halogen 15V/250W)
--------	---------------------------------------

The devices have a standard adapter for storz light guides. Optional: Olympus, Wolf, ACMI

#### Technical Data

Lamp	Halogen 250W/ 24 V
Operating life	~ 50 hours
Colour Temperature	3.600°K
Line Voltage	115/230 VAC
Frequency	50/60 Hz
Power Consumption	26 W
Brightness Control	Stepless /mechan. Shutter
Light Cable Connector	1 Storz (2 Storz for PM-HL-250-DX))
Weight	8,0 kg
Dimensions (WxHxD)	355 x 110 x 347 mm
Classified	BF
Produced a.tested acc	IEC601-1/ CE, EN 60601-1 93/42 ECC
Working Temp.	+ 10° - + 40°C

## DEVICES

### CO<sub>2</sub> Insufflators



ProFlow insufflators are representing Insufflators of the newest technology with highest safety standards in a reasonable price to performance ratio. The units are completely micro processor controlled and are working with ACF (Advanced Continuous Flow) which guarantees stable pressure balance without any disruption of gas flow. The units are very simple to use and are showing the data of the pre-selected pressure (mm/Hg); the pre-selected Flow (l) /min and the volume of gas used by LED displays.

An automatic gas heater system (optional) is reducing postoperative side effects during longer operation.

Technical Data	
<b>Insufflation Pressure</b>	0-30 mm/HG
<b>Gas Flow</b>	16/ (25) l / min
<b>Power Supply</b>	100-240 VAC, 50-60 Hz, 65 W
<b>Dimensions</b>	270 x 110 x 300 mm
<b>Weight</b>	5,8 kg
<b>Gas</b>	CO <sub>2</sub> , carbon dioxide (medical)
<b>Gas Connection</b>	UNF 7/6"
<b>Classified</b>	2 b / BF
<b>Produced a. tested acc.:</b>	IEC 601-1/ CE 0123; EN 60601-1 93/42 ECC

#### Order Details

<b>PM-COF-16</b>	CO <sub>2</sub> insufflator, 16 l/ min
Including	Insufflator, Mains Cord High Pressure Tube UNF Wrench set: SW 15/ SW30 Sterile filter, Silicon tubing set Heating device incl. tubing set (only for "H" version) User Manual
<b>PM-COF-16-P</b>	CO <sub>2</sub> - Insufflator, 16l/min As above with Pin- index connection
<b>PM-COF-16-H</b>	CO <sub>2</sub> - Insufflator, 16 l/min As above- with Gas heating system
<b>PM-COF-25</b>	CO <sub>2</sub> - Insufflator, 25 l/min As above- with Gas flow: 25 l/ min
<b>PM-COF-25-H</b>	CO <sub>2</sub> - Insufflator, 25 l/min As above- with Gas heating system

## DEVICES

### CO2 Insufflators

#### PM-FL-43-HX



Promis Insufflators are representing Insufflators of the newest technology with highest safety standards in a reasonable price-performance ratio. The units are completely microprocessor controlled and are working with ACF (Advance Continuous Flow) which guarantees stable pressure balance without any disruption of gas-flow. The units are very simple to use and are showing the data of the preselected pressure (mm/Hg); the pre-selected Flow (l/min) and the volume of gas used by LED-displays. An automatic gas heater system (optional) is reducing postoperative side-effects during longer operations.

#### Technical data

<b>Insufflation Pressure</b>	0-30 mm/HG
<b>Gas Flow</b>	20/30/43l/ min
<b>Power supply</b>	00-240 VAC, 50-60 Hz, 65 W
<b>Dimensions</b>	355 x 110 x 347 mm
<b>Weight</b>	8,0 Kg
<b>Gas</b>	CO2, carbon dioxide (medical)
<b>Gas Connection</b>	UNF 7/16" / Pin Index/ISO 5142
<b>Classified</b>	2 b/ BF
<b>Produced a.tested Acc</b>	IEC/601-1/ EN 60601-1 \\ 93/94 ECC

#### Order Details

<b>PM-FL-20-X</b>	CO2 insufflator, 20 l/ min Including Insufflator, Mains Cord High Pressure Tube UNF Wrench set: SW 15/ SW30 Sterile filter, Silicon tube Heating device incl. tubing set (only for "HX" version) User Manual
<b>PM-FL-20-HX</b>	CO2- Insufflator, 20 l/min As above- with Gas heating system
<b>PM-FL-30-X</b>	CO2- Insufflator, 30 l/min As above- with 30l/min
<b>PM-FL-30-HX</b>	CO2- Insufflator, 30 l/min As above- with Gas heating system
<b>PM-FL-43-X</b>	CO2-Insufflator, 43 l/ min As above- with gas heating system
<b>PM-FL-43-HX</b>	CO2- Insufflator, 20 l / min As above- with gas heating system

## DEVICES

### Suction & Irrigation Pumps

#### PM-MS-3000



#### Order Details

<b>PM-MS-3000</b> Including	Suction - Irrigation pump Pump, Secretion glass bottle 2l Bottle holder for rinsing-bottle 2l 2 Sterile filter Silicon tubing set for rinsing Silicon tubing set for suction Puncture tube for rinsing bottle User Manual
--------------------------------	--

#### Accessories

<b>PM-MS-TS</b>	Tubing Set
<b>PM-MS-F</b>	Filter
<b>PM-MS-B</b>	Suction bottle
<b>PM-MS-PT</b>	Puncture tube

#### Technical Data

Power Supply:	115 VAC / 230 VAC switchable
Irrigation:	max. 3000 ml/min
Suction:	max. 3000 ml/min
Dimensions:	353 x 105 x 253 mm
Weight:	4,5 Kg
Classified:	2 a / BF
Produced a. tested acc.:	IEC 601-1/ EN 60601-1 93/94 ECC

## DEVICES

### Irrigation Pumps for Hysteroscopy, Arthroscopy, Ureteroscopy

#### PM-HYS-2000-T



The irrigation units for the different applications are meeting highest safety standards and are simply to operate.

Order Details	
<b>PM-HYS-2000-T</b> Including	Irrigation pump for Hysteroscopy Mains Cord Silicon tubing Unsterile, autoclavable Measuring chamber unsterile Autoclavable Membrane protector User Manual
<b>PM-AT-2000</b> Including	Irrigation pump for Arthroscopy As above – With spec. pressure and rinsing values
<b>PM-UR-2000</b> Including	Irrigation pump for Ureteroscopy as above – With spec. pressure and rinsing values
Accessories	
<b>PM-MC</b>	Measuring chamber, autoclavable, 10 Pcs.
<b>PM-MP</b>	Membrane protector, autoclavable
<b>PM-TS</b>	Silicon tubing set, unsterile
<b>PM-TSD</b>	PVC-Tubing set, sterile, 10 pcs.

Technical Data	
Power Supply	100-240 VAC, 90 VA, 50-60 Hz
Rinsing capacity:	Hysteroscopy: 0-500 ml/min Arthroscopy: 0-1500 ml/min Ureteroscopy: 0-1000 ml/min
Gas flow:	16 (25) l/min
Dimensions:	CCU: 300 x 93 x 260 mm
Weight:	CCU: 5,0 Kg
Classified:	2 a / BF
Produced a.tested acc.:	IEC 601-1/CE 0404; EN 60601-1 93/94 ECC

## Arthroscopy Shaver System

### SV 8002

#### Features:

Two outputs for handpieces. Device recognizes connected handpiece and automatically sets work parameters.

Whole hand piece is autoclavable or sterilizable.

Electronically controlled protection against overloading the handpiece.

Non-Volatile memory of recent settings (rotation speed, language menu)

Stable work while ascillation. Thanks to engine fluent start, the sharp tugs are disposed.

Possibility to change handpiece with Foot Switch.

Short ascillate and rotate.

Multi-language menu



#### Handpiece Specifications:-

##### Basic data:

Length	180 mm
Weight	400 g
Speed Range	800-8000 RPM (+/-10%)
Oscillate Cycle	0,3-1, 2 sec.
Type of work	Continuous
Cable Length	3m
Sterilization	Steam sterilization
Safety Class	I

##### Storage & traqnsport condition:

Ambient temperature	-20 to +45° C
Relative humidity	10% to 85%

##### Work Conditions:

Ambient temperature	-10 to +40° C
Relative humidity	30% to 100%



Hand Piece



Foot Switch

#### Controller for Shaver System Promis SV-8002

##### Specifications:-

Power Input	90-263V AC
Power Consumption	65 VA
Frequency	50/60 Hz
Fuses	2 X T 1.25 A L250 V
Dimensions	330x306x96 (mm)
Weight	5, 2 Kg
Ambient temperature	+10°C-+40°C in function
Max relative air humidity	85% in function
Ambient temperature	-20°C-+45°C in function
Max. relative air humidity	85% in storage
Classification	Class I / B
Casing Safety Standard	IP X0, not protected Against Waterfalls
CE Standard	Conform to the European Directive 93/42/EEC
Safety Class	Ila

#### Foot Switches SF-8005 series Specifications:-

##### Basic data:

Dimensions	28x280x215 mm
Weight	3200 g
Cable Length	3 m
Functions	Clockwise and anticlockwise Rotation, oscillation, speed Control

##### Storage & transport condition:

Ambient temperature	-20 to +45° C
Relative humidity	10% to 90%

##### Work conditions:

Ambient temperature	+10 to +40°C
Relative humidity	30% to 100%



## DEVICES

### Digital Video Colposcope

#### COLpro222DX-OZview

---

##### Key Features

**Variable Light Intensity:** Facility to increase or decrease light intensity to 5 different levels to observe finest changes in tissue structure

**Variable Electronic Green Filter:** Facility to choose from 5 different grades of EGF to ensure best diagnosis.

**Variable Image Colors:** Facility to choose from 5 different settings of image colors to achieve best color differentiation in epithelium.

**E-flip & Mirror Image:** Facility to change the direction of the image from left to right horizontally and from upward to downward vertically to get the view of cervix to your liking.

**Gamma Processor:** It can be accessed through remote control. It assures high image quality processing for better visualization of vessels and tissue structure.

**Remote control of important functions:** Facility to control important functions of the colposcope completely even from a distance saving you the effort and time without losing focus on the patient's examination area.

**Auto Focus :** Facility to focus on the object automatically.

**Magnification:** Facility to continuously magnify images using zoom-in & zoom-out buttons to make perfect observation.

**Freedom of Connectivity:** Facility to connect to TV, medical grade monitor, desktop computer or laptop.

**User Friendly Design:** It is based on ergonomic design .Easy to operate can fit into any type of environment and it is built on stand that can be moved to any location as per user's discretion.

**Maintenance free Light Source:** Double layer of shadowless LED light source is built in the colposcopies head. This is maintenance free




---

##### Specifications

Image Processor	SONY Japan Color CCD
Focus	Automatic & Manual
Pixels	12 00 000
Focus Distance	20-30cm / 30-40cm
E-flip & Mirror Image	Yes
Variable Color Contrast	Yes (5 steps)
Variable Light Intensity	Yes (5 steps)
Magnification Display	Yes
Multigrade Green Filter	Yes (5 steps)
S/N Ratio	> 48db
Avg LED Lamp Life	> 20000 hrs
Test Timer	Yes
Color Temperature	7000° K
Depth of View	Ø200mm- 5mm

Resolution	>825 lines (standard) >1000 with GAMMA 'ON'
Viewing Area	Ø 170mm-10mm
Zoom	1-45x
Safety Standard	Complies to IEC 60601
Remote control	for operative function for technical services (optional)
Illumination	High MCD Super Bright White Shadowless LED Light Double Layer
Gamma Processor	Optional through remote
Power supply	100-240 VAC, 50/60 Hz

## DEVICES

### Digital Video Colposcope

#### COLpro777-Full-HD

##### Key Features

**Variable Light Intensity:** Facility to increase or decrease light intensity to 5 different levels to observe finest changes in tissue structure

**Variable Electronic Green Filter:** Facility to choose from 5 different grades of EGF to ensure best diagnosis.

**Variable Image Colors:** Facility to choose from 5 different settings of image colors to achieve best color differentiation in epithelium.

**E-flip & Mirror Image:** Facility to change the direction of the image from left to right horizontally and from upward to downward vertically to get the view of cervix to your liking.

**Gamma Processor:** It can be accessed through remote control. It assures high image quality processing for better visualization of vessels and tissue structure.

**Remote control of important functions:** Facility to control important functions of the colposcope completely even from a distance saving you the effort and time without losing focus on the patient's examination area.

**Auto Focus :** Facility to focus on the object automatically.

**Magnification:** Facility to continuously magnify images using zoom-in & zoom-out buttons to make perfect observation.

**Freedom of Connectivity:** Facility to connect to TV, medical grade monitor, desktop computer or laptop.

**User Friendly Design:** It is based on ergonomic design .Easy to operate can fit into any type of environment and it is built on stand that can be moved to any location as per user's discretion.

**Maintenance free Light Source:** Double layer of shadowless LED light source is built in the colposcopies head. This is maintenance free



##### Specifications:

CCD Sensor	1/3 type CMOS
Pixels	2, 000, 000
Aspect Ratio	16:9
E-flip & Mirror Image	Yes
Variable Light Image	Yes
Electronic Green Filter	Yes
S/N Ratio	>50 db
Color Temperature	7000°K
Resloution	>1000 TV Lines
Power Supply	100-240 VAC, 50/60 Hz
Remote control	For operative function
Safety Standard	Complies to IEC 60601

Focus	Automatic & Manual
Focus Distance	30-40 cm
Depth of view	Ø 200mm-5mm
Viewing Area	Ø 170mm – 10mm
Magnification	1-45x
Image Freeze function	Yes (Internal)
Electronic Shutter	Yes
Video Outputs	Full-HD: (Y/P <sub>b</sub> /P <sub>r</sub> )
Illumination	High MCD Super Bright white Shadowless LED light for true color reproduction

## DEVICES

### Colposcope Image, Video & Patient Data Management Software

#### Key Features

Compatible to Windows 7 (64-bit)/XP/Vista Operating Systems

Upgradable with new applications in future

Easy to install and maintain

Password protected log-in to ensure data privacy

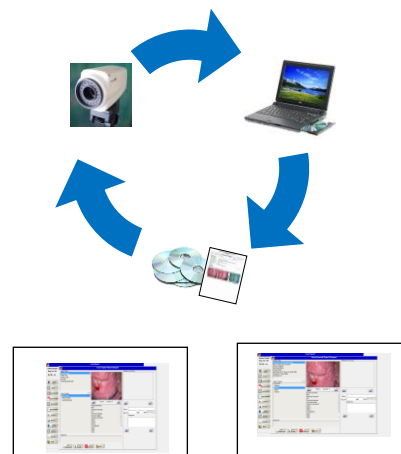
Enormous level of live recording facility and image capturing at very high pixels simultaneously with just a click

Various Kinds of colposcope video clippings, movies, images for reference and education purpose have been incorporated in the software

Footswitch for capturing and saving images

Software can be supported by our customer support team by use of remote support tools such as Team Viewer etc.

Print out of reports with relevant details can be prepared for future follow-up of the patient



#### Key Applications:

Comparison mode with linked images: Image library of more than 1000 images facilitates to compare the present image of the patient with the various kind of images of different natures and disease with interpretation to arrive at a fast conclusion and diagnosis.

Auto Analysis: it is a perfect way to make your colposcope procedure more precise. The generation of scores guides you to arrive at a diagnosis based on the selection of various parameters mentioned in REID evaluation.

Statistical data representation with graph: you can segregate the desired data pertaining to patient and types of diseases with precision, differentiation & classification.

Multiformat 1-2-3-4 images diagnosis report: Multi-format reports can be generated with all comments & details pertaining to colposcope procedure. Reports can be saved as well as emailed.

HAMMOND graph (biopsy graph): It facilitates to mark an area according to your finding and observation found on the cervix. A biopsy place can easily be marked for further observation.

Marking and highlighting: Marking and highlighting of any abnormality seen on the cervix. Thus one can highlight any region of interest in report, found during colposcopy procedure.

LEEP / LLETZ is currently one of the most commonly used approaches to treat high grade dysplasia (CIN II/III, HGSIL) discovered on colposcopic examination. Our Software covers it comprehensively.

Cryo surgery report with all details like which gas used, thaw cycle, ice ball creation & freezing. A perfect cryo procedure under the high quality magnified vision of colposcope is now possible.

Forensic examination & sexual abuse in the setting of a forensic examination following rape, child abuse etc., it allows practitioners to identify and photograph genital injury not readily visible to the unaided eye, thereby clarifying the location and extent of injury as well as providing evidence for court proceedings. The case can be recorded, documented and photographed. Magnified images of the oral pharynx, genital and rectal areas can be obtained. Minor skin/mucosal trauma such as abrasions, lacerations, scars, petechial, focal edema, hymenal tear and anal fissures are more easily seen with magnifications.

Video MTP (Medical Termination of Pregnancy) Gone are the days of blind D & C procedure to induce surgical termination of pregnancy (abortion). When used with proMIS Medical's Video MTP System "Safe View" enables you to record case and capture images of the procedure with facility of preparing patient report.